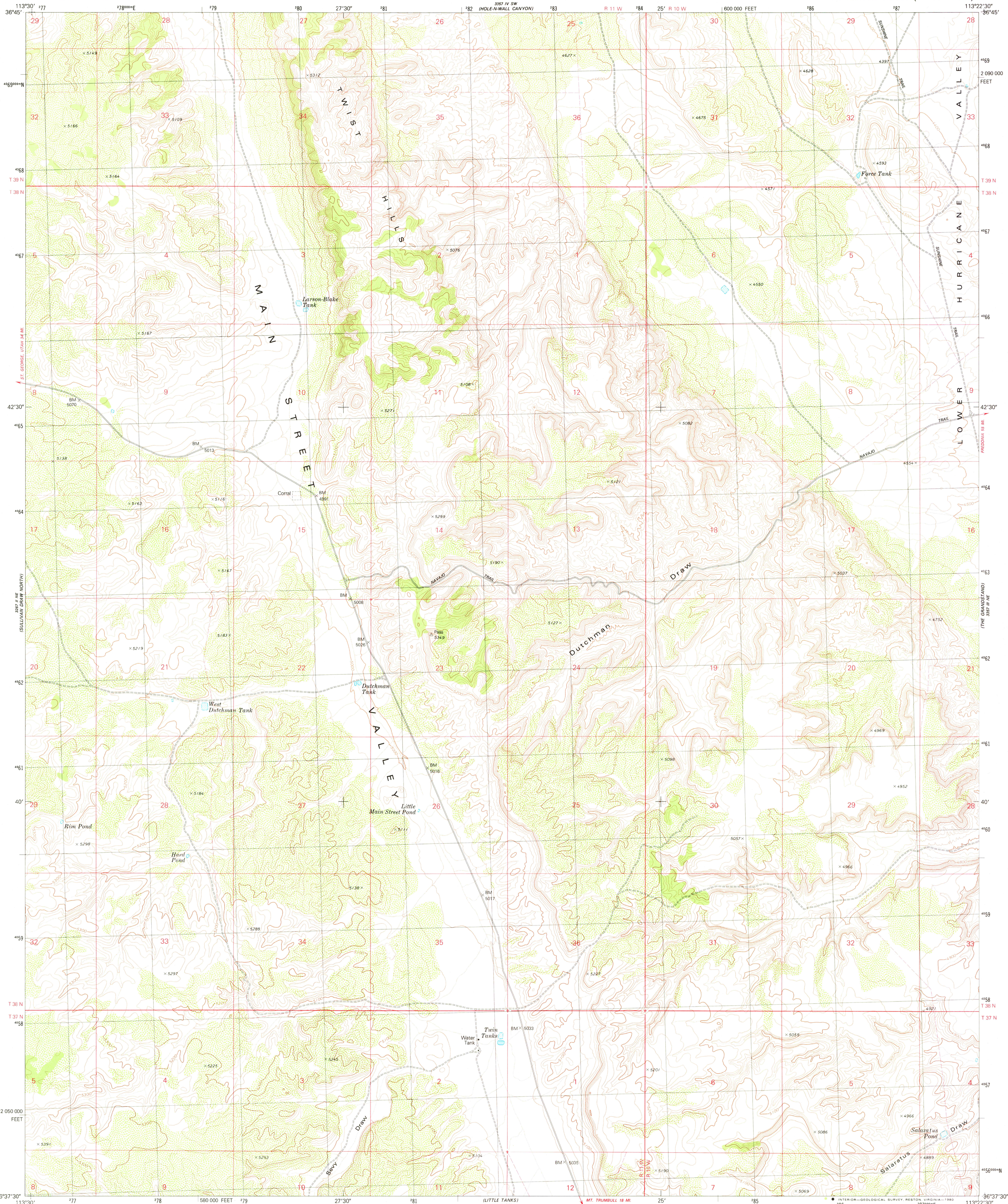


UNITED STATES  
DEPARTMENT OF THE INTERIOR  
GEOLOGICAL SURVEY

DUTCHMAN DRAW QUADRANGLE  
ARIZONA—MOHAVE CO.  
7.5 MINUTE SERIES (TOPOGRAPHIC)



Mapped, edited, and published by the Geological Survey

Control by USGS and NOS/NOAA

Topography by photogrammetric methods from aerial photographs taken 1974. Field checked 1975. Map edited 1979

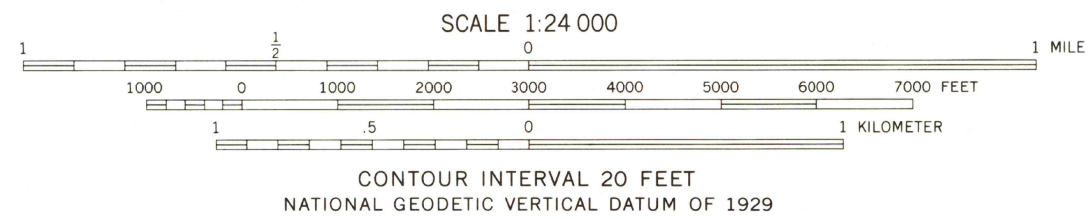
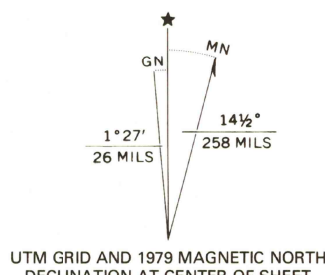
Projection and 10,000-foot grid ticks: Arizona coordinate system, west zone (transverse Mercator)

1000-meter Universal Transverse Mercator grid, zone 12

1927 North American Datum

To place on the predicted North American Datum 1983 move the projection lines 5 meters north and 70 meters east as shown by dashed corner ticks

Fine red dashed lines indicate selected fence and field lines where generally visible on aerial photographs. This information is unchecked



ROAD CLASSIFICATION	
Primary highway, hard surface	Light-duty road, hard or improved surface
Secondary highway, hard surface	Unimproved road
Interstate Route	U. S. Route
	State Route

DUTCHMAN DRAW, ARIZ.  
N3637.5-W11322.5/7.5

1979

DMA 3357 III NW—SERIES V898

USGS  
Historical File  
Topographic Division

MAY - 5 1980